



**VISION:** A socioeconomically developed town with empowered people who nurture their heritage and sustainably manage their resources through shared and service-oriented governance  
**MISSION:** To create a socioeconomically developed environment through sustainable management of resources and enhancement of people's capabilities for inclusive growth

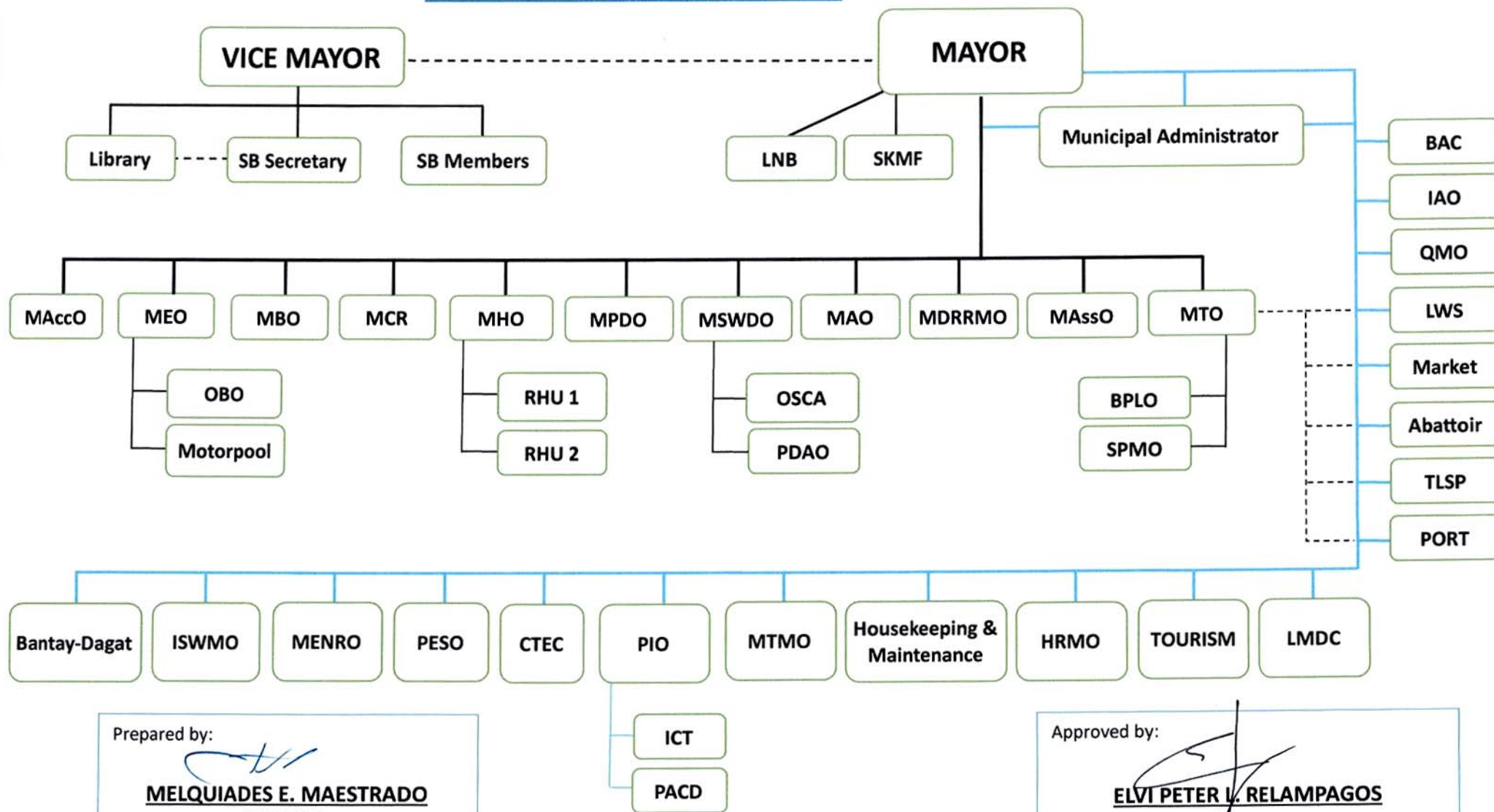
### ORGANIZATIONAL STRUCTURE

**LEGEND:**

- SB – Sangguniang Bayan
- SKMF – Sangguniang Kabataan Municipal Federation
- LNB – Liga ng mga Barangay
- MAccO – Municipal Accounting Office
- MEO – Municipal Engineering Office
- OBO – Office of the Building Official
- MBO – Municipal Budget Office
- MCR – Municipal Civil Registry
- MHO – Municipal Health Office
- RHU – Rural Health Unit
- MPDO – Municipal Planning and Development Office
- MSWDO – Municipal Social Welfare and Development Office
- OSCA – Office of the Senior Citizens Affairs
- PDAO – Persons with Disability Affairs Office
- MAO – Municipal Agriculture Office
- MDRRMO – Municipal Disaster Risk Reduction and Management Office
- MAssO – Municipal Assessor's Office
- MTO – Municipal Treasury Office
- BPLO – Business Permit and Licensing Office
- SPMO – Supply and Property Management Office

*Services under direct supervision of the office of the Mayor*

- BAC – Bids and Awards Committee
- IAO – Internal Audit Office
- QMO – Quality Management Office
- LWS – Loon Waterworks System
- TLSP – Tubig-Loon Spring Park
- ISWMO – Integrated Solid Waste Management Office
- MENRO – Municipal Environment and Natural Resources Office
- PESO – Public Employment Service Office
- CTEC – Community Training and Employment Coordinators
- PIO – Public Information Office
- ICT – Information and Communication Technology
- PACD – Public Assistance & Complaints Desk
- MTMO – Municipal Traffic Management Office
- HRMO – Human Resource Management Office
- LMDC – Loon Manpower and Development Center



Prepared by:  
  
**MELQUIADES E. MAESTRADO**  
HRMO III

Approved by:  
  
**ELVI PETER V. RELAMPAGOS**  
Mayor